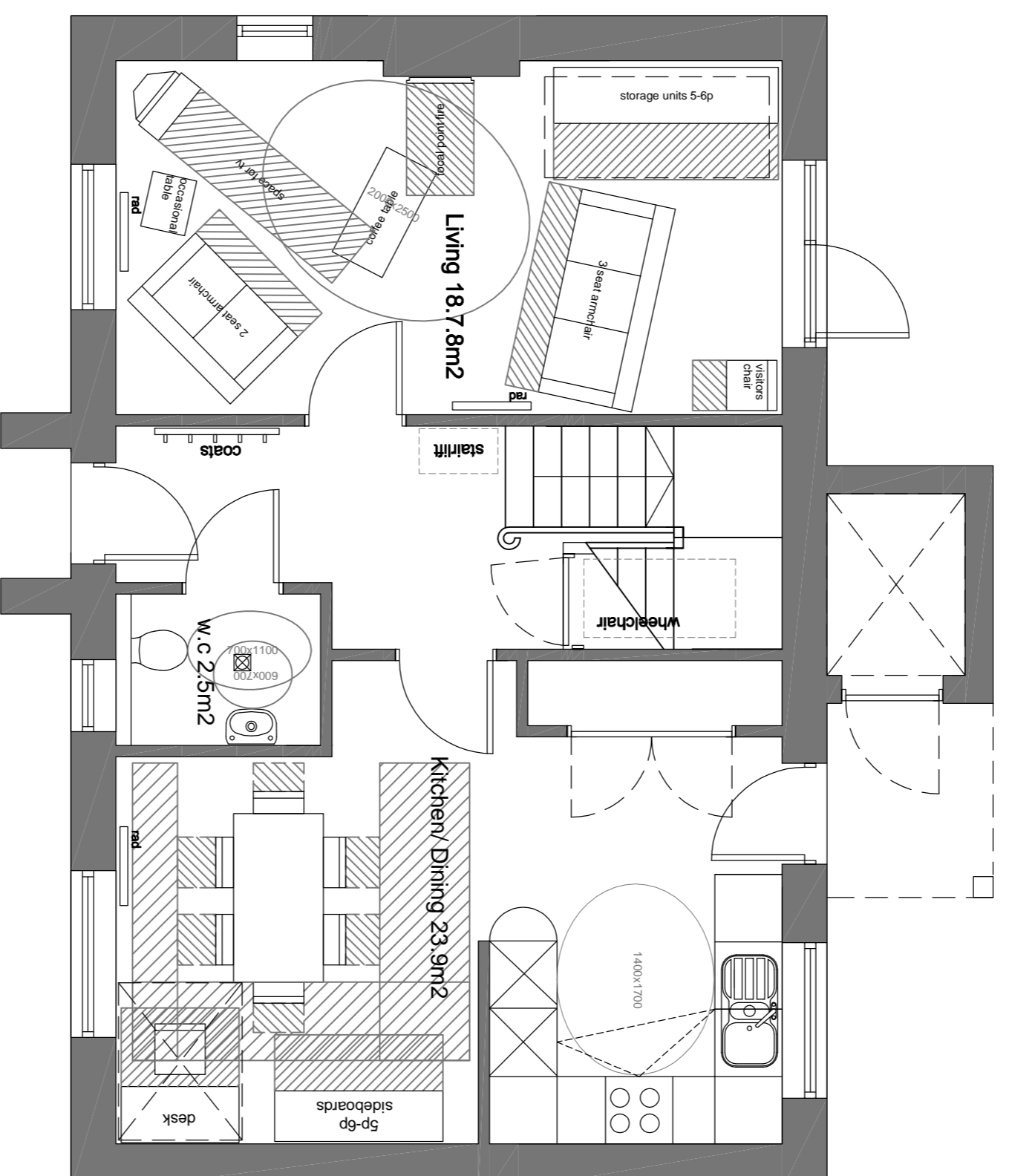
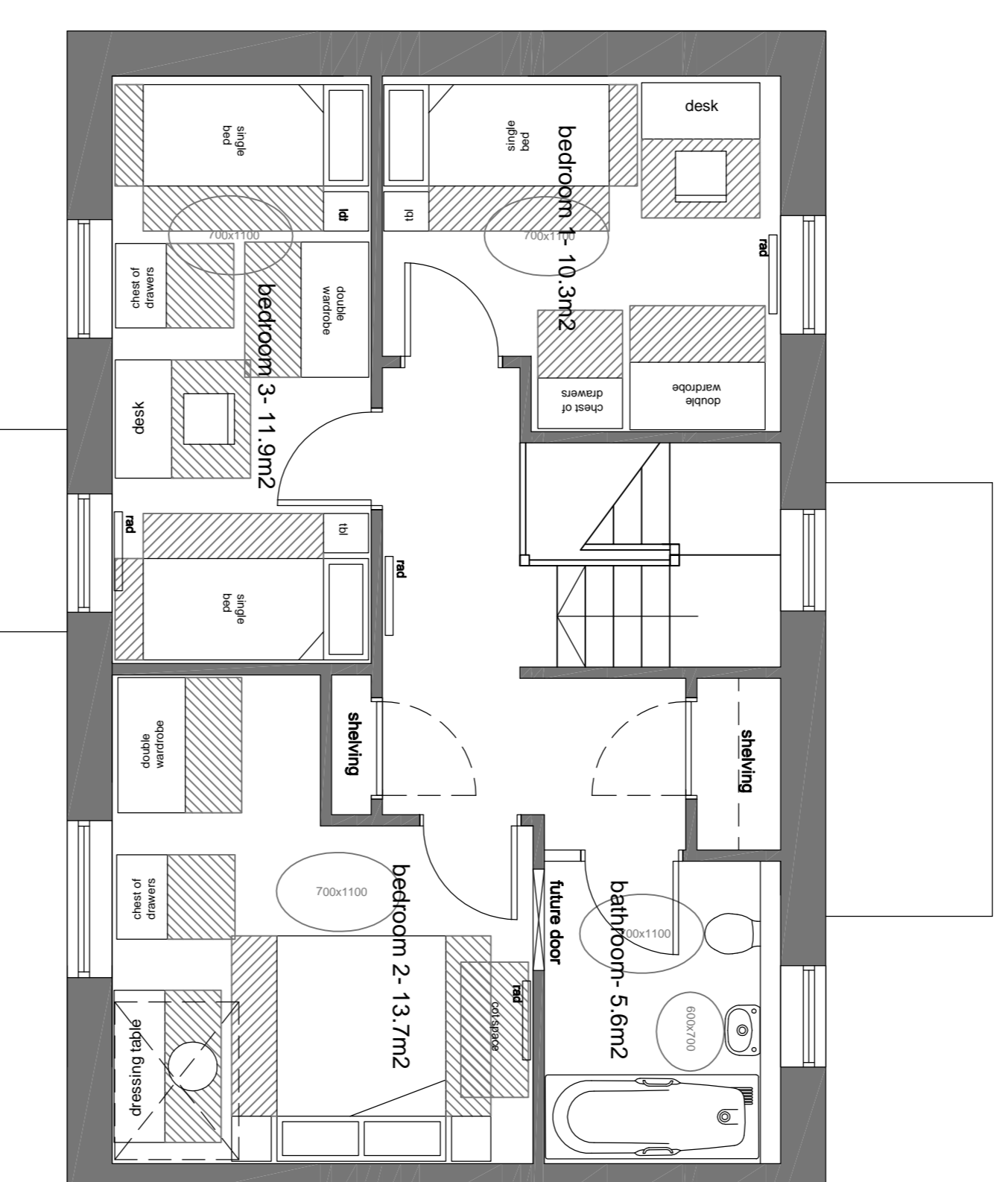


<b>Floor area</b>	
Ground floor area	59 m2
First floor area	57.2 m2
Gross internal area	116.2 m2

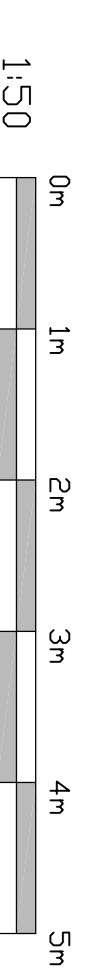


ground floor plan



first floor plan

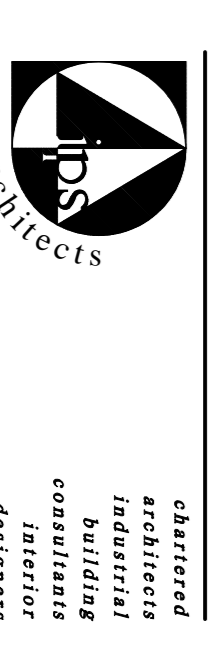
3 bedroom 5 person  
detached house  
type D



**FOR PLANNING**  
client  
LCI

contract  
residential development  
Crosby ravensthorpe  
Cumbria

drawing  
Type D floor plans



drawings 01625 875/109 - evi  
scale: 1:50 © 01 date: dec 10  
issuing office:  
outrigill kirby kirkcubbin, cumbria, CA17 4UJ  
tel & fax: 017683 71103  
www.jpsarchitects.co.uk